

Part-time Courses

1

**GERMAN / DUAL EDUCATION
SYSTEM**

2

PREREQUISITES

3

CONTENTS OF TRAINING

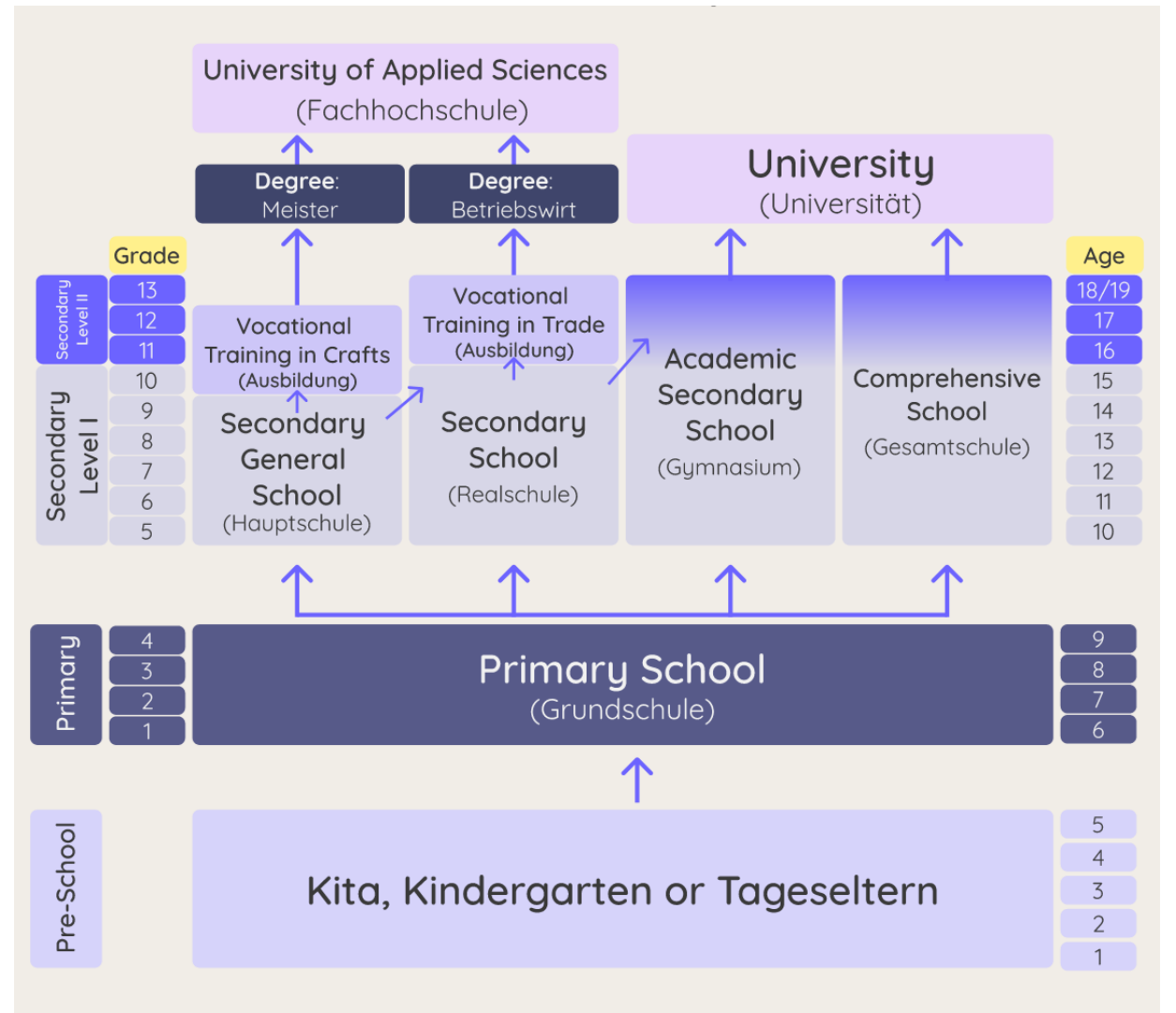
4

JOBS / TRAININGS

5

Q&A

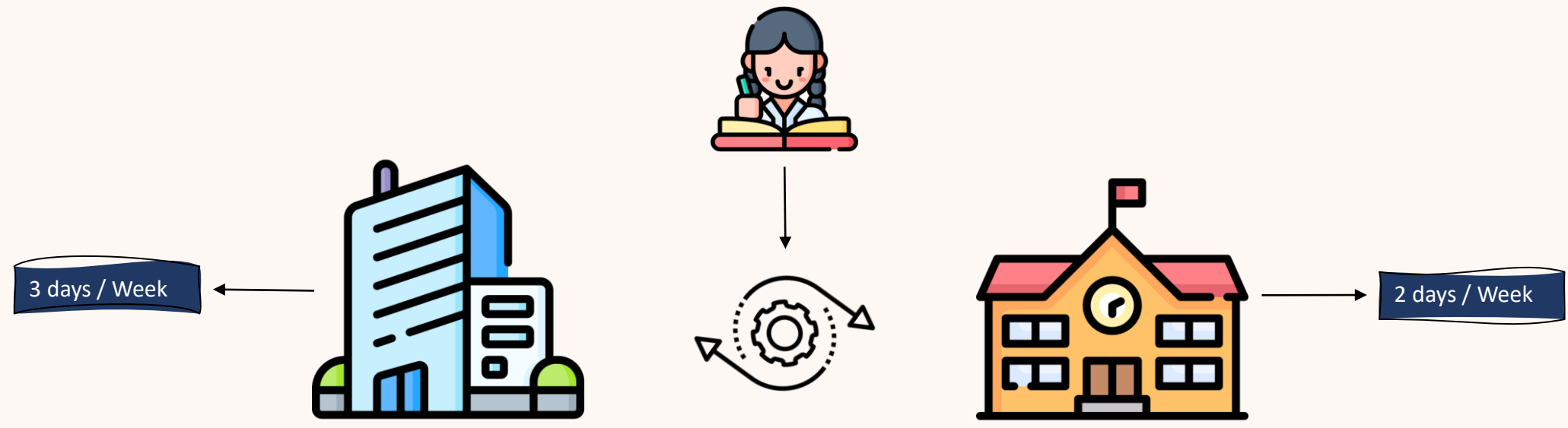
German Education System



The Dual System of Education

- combines vocational training & theoretical education
- has existed in Germany for over a century
- has contributed to the country's economic success
- structured around specific occupations
- access to a highly skilled and motivated workforce.

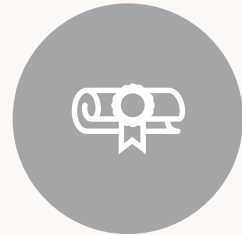
Workday



Prerequisites



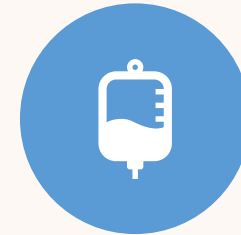
AGE



SCHOOL-LEAVING
CERTIFICATE



LANGUAGE SKILLS



HEALTH



APTITUDE TEST

Content of the training/work



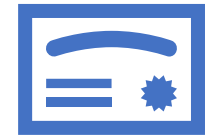
practical and theoretical
aspects



exams to test the
apprentice's knowledge
and skills



significant amount of
time in company



certificate documents

Jobs

- machine and plant operator
- industrial clerk
- nursery school teacher
- gardener
- etc.

Machine- and plant Operator

- 2 years' training (Dual System of Education)
- Operating and maintaining machinery in a variety of industries
- Changing the machines' parameters to adjust the quality of the product
- Monitoring production (of their said machine)

	First year	Second year	entry salary	Avg salary
Salary approx.	€950	€1000	€1700 - €2100	€2800

Machine- and plant Operator

- Strong understanding of machines and equipment
- Basic mathematics
- Problem solving skills
- Communication skills
- High school diploma or GCSE (General Certificate of Secondary Education)



Machine- and plant operator

Further education:

Master-training

- Production engineering
- Metal processing
- Plastics processing
- Paper production
- Maintenance and servicing



Bachelor of Science:

- Production Engineering
- Mechanical Engineering
- Plant Operations Engineering

Industrial Clerk

Unique Lessons:

- Business processes
- Cost-/accounting
- Economic and social processes
- Business informatics



	First Year	Second Year	Third Year	Requirement:
Salary	€860-950	€930-1020	€1010-1110	Employment contract for trainees with a company

Industrial Clerk

Final exam:

- 3/4 written, 1/4 presentation + theoretical discussion
- Business processes (40%)
- Accounting (20%)
- Economic and social processes (10%)
- Presentation centered around specific assignment (30%)

Based on 2011's final exam Information



Second year:

- Rhetoric course
- Trip to England

Industrial Clerk

Further educations:



State-certified
business manager

full-time
part-time

Further Specialist
Training

Marketing
bureaucracy
organization
(3-4 yrs)

Accountant

study economics

Nursery school teacher

Prerequisites

- secondary school leaving certificate
- authorization to take the A-levels



General info about the training

- Prepares students for health, education, and social work
- State exam with written and oral parts
 - Salary: -



Content of the Training

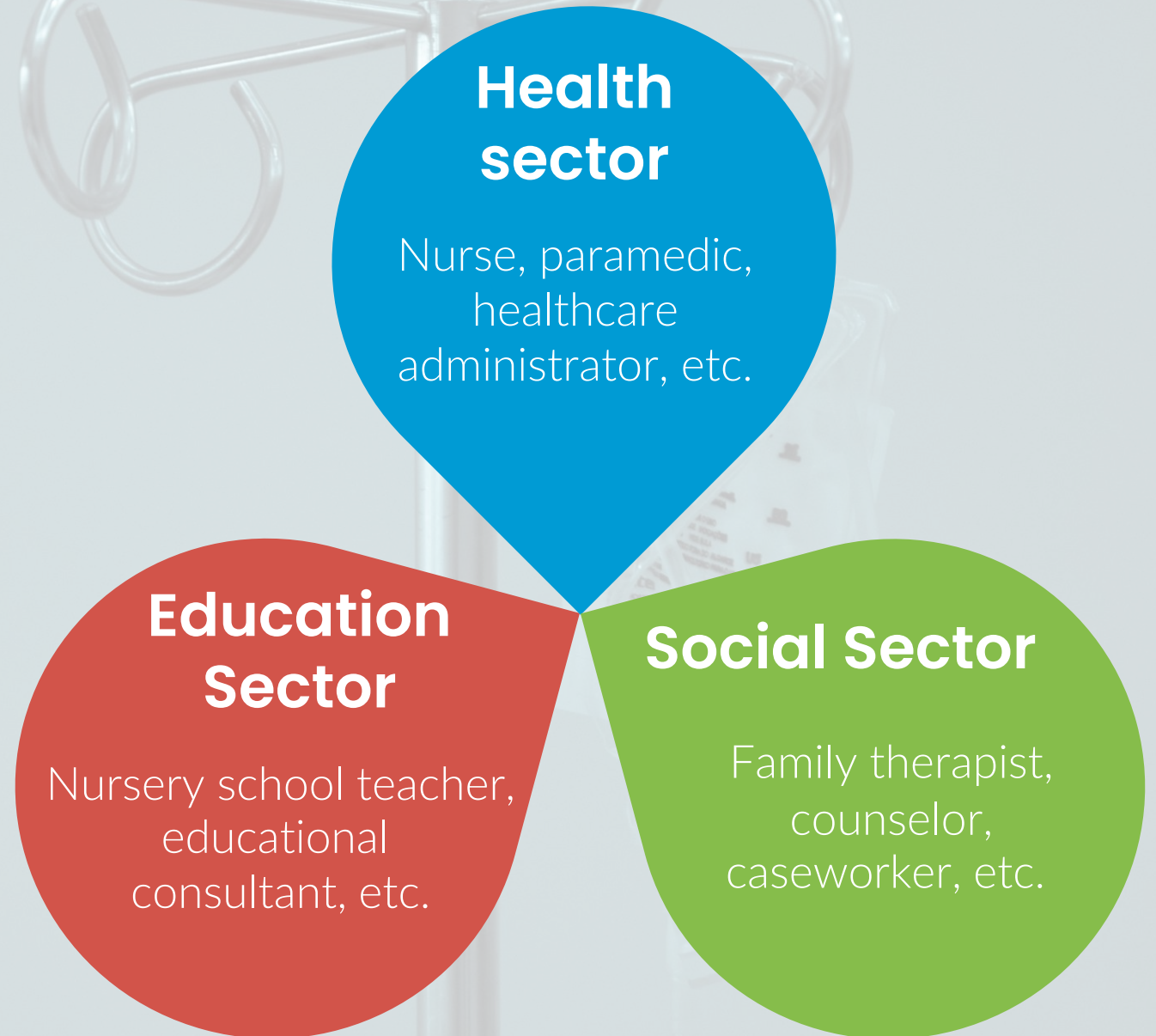
- two-year program with vocational education
- Full-time education + 2x three-week internships



Possibilities after graduation

- Graduates can pursue vocational training
- Provides part of advanced college certificate

Possible professions



Gardening and landscaping

Requirements for this course:

- GCSE

Dual-system:

- 2 days a week school
- 3 days at work

Further education:

Master-training

full-time / part
time / online

Specialist for:

tree care,
sport fields

Nature and
landscape
conservationists

Study

GERMAN / DUAL
EDUCATION SYSTEM

PREREQUISITES

CONTENTS OF TRAINING

MACHINE OPERATOR

INDUSTRIAL CLERK

NURSERY

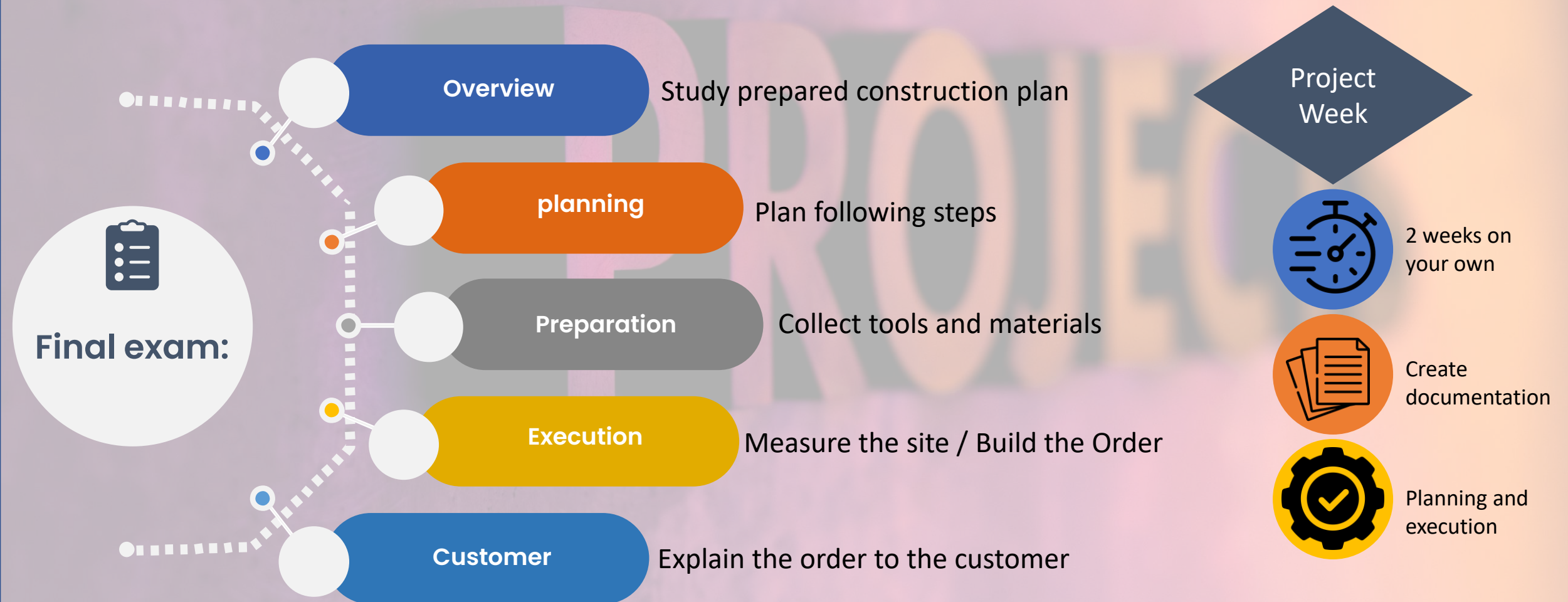
GALA

Gardening and landscaping

	First year	Second Year	Third Year
Salary	€740 - 900	€840 – 1000	€1060
Know-How	Seed Beds, maintain wood and lakes	Setup river and lakes	Erecting fences, creating walls and steps

	Practice	Theory	Plant test	Verbal
Intermediate exam (Low influence on FE)		<ul style="list-style-type: none"> - Vocational school - 3h 		
Final exam	<ul style="list-style-type: none"> - 2 h structural engineering - Vegetation technology 	<ul style="list-style-type: none"> - Vocational school - 3h - Maths - Plant use - structural engineering - Economy 	<ul style="list-style-type: none"> - 45 min - Plant use - Plant identification 	<ul style="list-style-type: none"> - 3 Auditor - 1 h - Technical discussion about construction plan

Gardening and landscaping





Any Questions

Sources

- www.landwirtschaftskammer.de
- www.lwk-niedersachsen.de
- www.ausbildung.de
- www.berufskolleg.schule
- www.ausbildung.de
- <https://www.aubi-plus.de/berufe/maschinen-und-anlagenfuehrerin-620/zukunftschancen/>