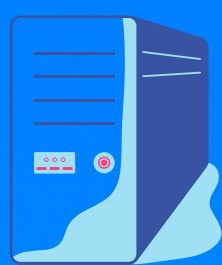
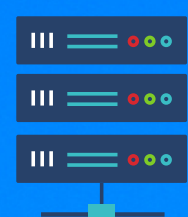


Energy consumption during operation



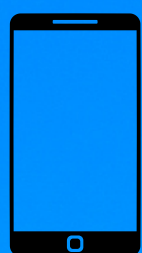
200W/hour, in 8h almost 600kWh= ~175kg of CO2 per year



850W/hour on average, ~2520kg of CO2 per year

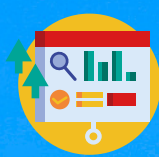


50-100W/hour, in 8h use 150-300kWh=~44-88kg of CO2 per year

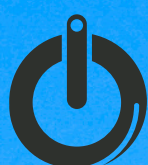


14.8W/hour on average, 3.778 kg of CO2 per year

How to reduce the energy consumption



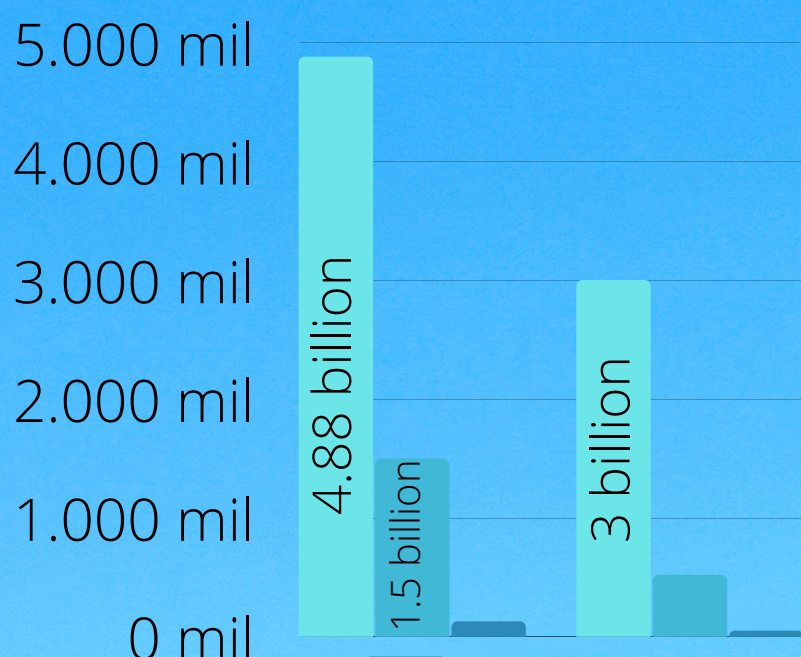
Optimize devices to use energy more efficiently. (more power, less energy)



Turn off device-s if you don't use them.



Make users aware, how much they use energy and what uses.



In use



Devices sold each year

Thrown away each year

sources:

<https://www.energuide.be>
<https://www.zdnet.com>
<https://www.quora.com>
<https://www.statista.com>



Co-funded by the
Erasmus+ Programme
of the European Union